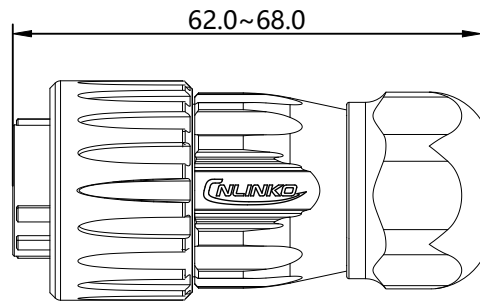
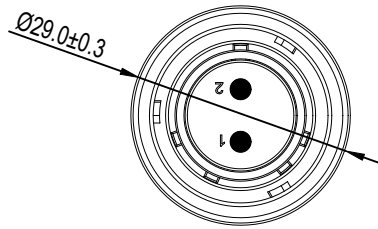
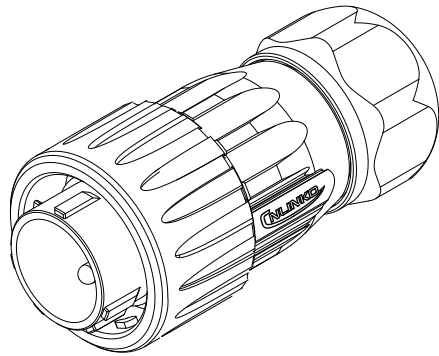
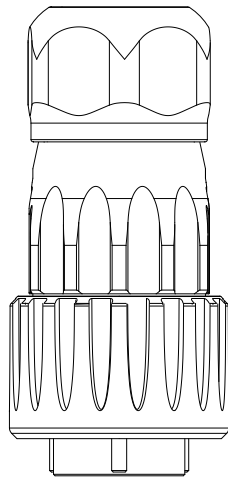


ECN NO.	REV.	MODIFICATION	DATE	DRAW	APPROVED
/	A1	初版发行	2024/03/20	杨今心	宋星亮



编码原则:

Part Number rules

DH-20- X XX XX- X X -X XX X

1 2 3 4 5 6 7 8 9 10

1. 产品系列: 以两个字母表示如LP/DH/BD/YF/YP/YW/YZ/LK...等

Product series is represented by two capital letters such as LP/DH/BD/YF/YP/YW/YZ/LK, etc.

2. 产品型号: 12/16/20/24/28.

Product number

3. 公母类别: C=公针/端 J=母针/端 K=公母混合

Interface type C=male pin/end J=female pin/end K=both male and female pins

4. 接口类别:

Interface type

4.1 电源&信号:非PIN针=00

Non-pin type=00

PIN针类: 01=单芯 02=2芯 03=3芯 04=4芯....

Pin type:01=single pin 02=2 pin 03=3 pin 04=4 pin....

4.2 数据&信号类: USB\HDMI\RJ45\ (光纤: LC/FC/SC/ST/MPO/MTP等).

Signal class: USB\HDMI\RJ45\ (optical fiber: LC/FC/SC/ST/MPO/MTP, etc.)

数据&信号类范例:

Signal type example: /USB3A/1 0 0

USB 3A: USB 3.0

USB 3B: USB 3.1

其它款依此类推

And so on

0	0接口	0	不防水	0	带PCB板
1	1接口	1	防水	1	带Hsg
2	2接口			2	口朝上
				3	直通式
				4	带胶芯
				5	口朝下
				6	胶芯带线

5. 连接器类型 PE=插头 SX=插座 PP=对接插座

Connector Type PE=Plug SX=Receptacle PP=Floating connector

6. 接线方式 0=焊接 1=压接 2=锁线 3=铆接 4=其它

Wiring method 0=Soldering 1=Crimping 2=Screwing 3=Riveting 4=Other

7. 材料属性 1=塑胶+金属 2=全塑胶 3=全金属

Material 1=Plastic+metal 2=All plastic 3=All metal

8. 特殊码 0=插头 1=单孔直式插座 2=两孔法兰插座 4=四孔法兰插座

Special code 0=Plug/Floating connector 1=Single-hole straight receptacle

2=Two-hole flange receptacle 4=Four-hole flange receptacle

9. 流水码Streaming code :01-99

10. 区别码空白或A~Z / Distinction code:blank or A-Z

表一: 电气参数/Electrical parameters

芯数	2芯	3芯	4芯	4芯	5芯	7芯	9芯	12芯
公端 Male								
母端 Female								
额定电流 Rated current	20A			10A			5A	
额定电压 Rated voltage	300V AC			1500V AC			250V AC	
绝缘耐压 Dielectric withstanding voltage	1.0mΩ			3.0mΩ			5.0mΩ	
接触电阻 (Max) Contact resistance	500MΩ			1.0~1.5mm ² / 18~16AWG			0.34~0.5mm ² /22~20AWG	
绝缘电阻 (Min) Insulation resistance	2.5~4.0mm ² /14~12AWG			1.0~1.5mm ² / 18~16AWG			0.34~0.5mm ² /22~20AWG	
线规 Wire gauge	2.5~4.0mm ² /14~12AWG			1.0~1.5mm ² / 18~16AWG			0.34~0.5mm ² /22~20AWG	
端子形式 Terminal type	焊接/welding							
线规直径 Cable Ø	□φ5.0~φ6.5mm		□φ6.5~φ8.5mm		□φ8.5~φ10.0mm		□φ10.0~φ12.0mm	
紧固扭矩 Tightening torque	2.5N.m							
防护等级 IP code	对接状态 □IP65 □IP67 <input checked="" type="checkbox"/> IP68 □IPx9k							
机械寿命 (Min) Operating cycles	500次							
工作温度 Operating temperature	-40°C ~ +85°C(金属款/Metal shell)							

X.X±0.3 X°±3° X.XX±0.15 X.X'±1.0° X.XXX±0.100 未注圆角R0.2		 深圳市凌科电气有限公司 SHENZHEN LINKO ELECTRIC CO.,LTD	
TOLERANCES UNLESS OTHERWISE SPECIFIED			
DRAWN	杨今心	2024/03/20	TITLE:
CHECKED	杨武	2024/03/20	DH20型xx芯x插头金属款焊接式
APPROVED	宋星亮	2024/03/20	P/N:
UNIT: mm	SIZE:A4	SHEET:1/1	DH-20-xxxPE-03-0xxx A1
PORJ.		SCALE: /	